

ben or bene

1.

2.

3.

4.

5.

6.

mal

7.

8.

9.

10.

11.

12.

13.

14.

equ or equi

15.

16.

17.

18.

19.

20.

Read the spelling words and sentences.

1. malice	<i>malice</i>
2. benefit	<i>benefit</i>
3. equate	<i>equate</i>
4. malady	<i>malady</i>
5. equality	<i>equality</i>
6. beneficial	<i>beneficial</i>
7. benign	<i>benign</i>
8. malpractice	<i>malpractice</i>
9. equivocal	<i>equivocal</i>
10. malign	<i>malign</i>
11. benefactor	<i>benefactor</i>
12. equitable	<i>equitable</i>
13. beneficiary	<i>beneficiary</i>
14. malfunction	<i>malfunction</i>
15. malignant	<i>malignant</i>
16. equity	<i>equity</i>
17. malnutrition	<i>malnutrition</i>
18. equilibrium	<i>equilibrium</i>
19. benevolent	<i>benevolent</i>
20. malicious	<i>malicious</i>

I feel **malice** toward no one.The scholarships will **benefit** all of us.Do not **equate** fruit candy with real fruit.A doctor must first diagnose the **malady**.The **equality** of the new law is clear.Walking is **beneficial** to your health.This **benign** treatment has no side effects.Most doctors have **malpractice** insurance.Were the instructions clear or **equivocal**?I would never **malign** a decent person!A secret **benefactor** gave me this pen.An **equitable** solution is best.Who is the **beneficiary** of this policy?A light goes on if the brakes **malfunction**.Researchers help cure **malignant** diseases.The tests were graded with **equity**.A junk food diet can cause **malnutrition**.The ear infection affects my **equilibrium**.Many **benevolent** families donated toys.A **malicious** rumor can hurt people.**Think & Sort** the spelling words.1–6. Write the words that contain **ben** or **bene** meaning “good.”7–14. Write the words that contain **mal** meaning “bad.”15–20. Write the words that contain **equ** or **equi** meaning “same” or “equal.”**Remember**Knowing Latin forms such as **ben(e)**, **mal**, and **equ(i)** can give clues to the meaning and spelling of certain words.**Spelling
Tutor**

Word Meanings

Write a spelling word with the Latin form **mal** that matches each definition.

1. poor nutrition
2. a disease, disorder, or ailment
3. to speak evil of
4. to function abnormally
5. deliberately harmful
6. threatening to life or health
7. the desire to harm others

Word Replacements

Write a spelling word that could replace the underlined word or words in each sentence.

8. A gymnast needs a good sense of balance.
9. The law promises the state of being equal to all.
10. The intentionally misleading meaning of the letter confuses me.
11. A vacation would be advantageous right now.
12. I am the recipient of her kindness.
13. Such rules help promote fairness and justice.
14. Was it an example of improper treatment by a doctor?
15. The kitten was rescued by a kindly firefighter.

Use the Dictionary

Each group of scrambled letters is followed by the word history of a spelling word. Unscramble the spelling word and write it correctly. Check the answers in the **Spelling Dictionary**.

16. **gneibn**, from the Latin **bene** + **genus**, meaning "well-born"
17. **balequité**, from the Old French **équité**, meaning "equity"
18. **lifeben**, from the Latin **benefactum**, meaning "good deed"
19. **teague**, from the Latin **aequus**, meaning "even"
20. **bacotenerf**, from the Latin **benefactio**, meaning "to do well"

Word Meanings

1.

2.

3.

4.

5.

6.

7.

Word Replacements

8.

9.

10.

11.

12.

13.

14.

15.

Use the Dictionary

16.

17.

18.

19.

20.

Connections to READING

malice
beneficial
benefactor
equitybenefit
benign
equitable
malnutritionequate
malpractice
beneficiary
equilibriummalady
equivocal
malfunction
benevolentequality
malign
malignant
malicious

Complete the Analogies

1.

2.

3.

4.

5.

6.

7.

8.

Complete the Sentences

9.

10.

11.

12.

13.

14.

Use Context Clues

15.

16.

17.

18.

19.

20.

Complete the Analogies

Write the spelling word to complete each analogy.

1. **Correction** is to **error** as **cure** is to ____.2. **Unkind** is to **kind** as **malevolent** is to ____.3. **Hostile** is to **friendly** as **harmful** is to ____.4. **Medicine** is to **disease** as **nourishment** is to ____.5. **Spite** is to **spiteful** as **malice** is to ____.6. **Incomplete** is to **complete** as **inequity** is to ____.7. **Contribution** is to **donor** as **gift** is to ____.8. **Succeed** is to **fail** as **operate** is to ____.

Complete the Sentences

Write the spelling word that completes each sentence.

9. She is the ____ of her great-uncle's insurance policy.

10. Gossip and rumor can ____ innocent people.

11. The vet assured us that the cat's lump was not ____.

12. The speaker kept her ____ despite the breakdown of the sound system.

13. You hurt his feelings, even though you felt no ____.

14. This agreement seems fair and just to all parties; do you agree that it is ____?

Use Context Clues

Write spelling words from the box to complete the paragraph.

The drafters of the United States Constitution believed in 15. for all. They thought a strong constitution would be 16. to all citizens, and they were determined to 17. political power and the people's will. The founders carefully avoided making any statements that were 18. For example, the steps for removing a government official found guilty of 19. are very clear. Today, more than two hundred years later, citizens still 20. from the founders' work.

equate
benefit
equality
equivocal
malpractice
beneficial

Proofread a Paragraph

Proofread the paragraph below for ten misspelled words. Then rewrite the paragraph. Write the spelling words correctly and make the corrections indicated by the proofreading marks.

¶ We believe in the equalaty of all students in this school. The current rules do not provide sufficient equitty between sports teams and school clubs. We need an equitable distribution of support, supplies, and funds for every activity so that we can maintain an equilibreum among them. The student body will not be the only beneficiery. Everyone will benifit. Rules will also be clearer and more consistent; right now the rules are sometimes equivacal. I'm am sure that the donors to our sports programs believe that they are being benevalent, but a true benefactor should not feel malise if the funds are ^{used} for other worthy programs.

Proofreading Marks

≡	Make Uppercase
/	Make Lowercase
^	Add
~	Delete
⊙	Add a Period
¶	Indent

Argument Writing

Write a Paragraph

The U.S. Constitution is more than two hundred years old. Consider a student constitution for your school. Write a paragraph about this constitution, explaining its purpose and reason for existing. Clearly list the goals of the student constitution. Identify ways in which students would benefit. Use as many spelling words as you can.

- Use the writing process: prewrite, draft, revise, edit, and publish.
- State your opinion or position in the topic sentence.
- Make sure the reasons for your argument are logical. Include relevant details to support your opinion.
- Use complete sentences with correct capitalization, punctuation, grammar, and spelling.
- Read your paragraph. Circle three words that may be misspelled. Use a print or online dictionary to check the spelling.

Transfer

Think of two more words that contain **ben** or **bene** and two more words that contain **equ** or **equi**. Write the words in your Spelling Journal. Circle the Latin forms.

Word Study

Meaning Mastery

1.

2.

3.

4.

5.

6.

7.

8.

9.

10.

11.

12.

13.

14.

15.

Parts of Speech

16.

17.

18.

19.

20.

adequate
malevolent
malady
equilibrium
malpractice
equitable
equity
malaria
malcontent

benediction
malice
equality
benevolent
equivocal
beneficiary
equivalence
unequivocal
equalize

equator
benefit
beneficial
malicious
malign
malfunction
equivalent
beneficent
equinox

equally
equate
malnutrition
benign
benefactor
malignant
malaise
equatorial
equivocate

Use words from the list above to complete these exercises. Do not use a word more than once.

Meaning Mastery

A. Write the spelling word that combines the Latin form meaning with the base word meaning.

1. bad + business

4. bad + diet

2. bad + agreeable

5. equal + night

3. good + word

B. Complete these exercises.

6. Change the Latin form in **benevolent** to write the spelling word that is an antonym.

7–8. Write the words that have to do with disease.

C. Write the word that fits each meaning.

9. not benign

13. not malignant

10. giver

14. advantageous

11. receiver

15. discomfort

12. spiteful

Parts of Speech

16–17. Write the words that can be a noun or a verb.

18–20. Write the words that are always verbs.

Technology

Word Hunt

Read the passage below and look for words with the Latin forms **ben(e)**, **mal**, or **equ(i)**.

Nanotechnology involves the use of microscopic particles that can be engineered to do a variety of tasks. The use of nanotechnology in medicine offers some exciting possibilities.

Nanotechnology will provide more effective treatments against AIDS, malaria, and certain types of cancer. In some cases, it is already being used. Nanoparticles can deliver drugs to specific types of cells. These nanoparticles are engineered so that they are attracted only to diseased or malignant cells. This reduces damage to healthy or benign cells.

Nanocapsules of antibiotics are proving to be very beneficial to burn victims. The nanocapsules are inside burn dressings. If an infection starts, the harmful bacteria causes the nanocapsules to break open. This allows much quicker treatment and reduces the number of times a dressing has to be changed.

If the idea of getting a shot is enough to upset your equilibrium or leave you with a feeling of malaise, you'll love this: Instead of getting an injection, in many cases you can swallow nanoparticles of the drug. The nanoparticles pass through your stomach and enter your blood stream more quickly. And you don't get a stick!

Scientists are also using nanotechnology to fight malnutrition, a serious malady in many parts of the world. They have found that many nutrient substances are too large for a body to absorb, so they are making micronutrients that can be more easily absorbed and used by a body.

The use of nanotechnology in medicine is already proving to be an unequivocal benefit to many patients. Eventually, it could revolutionize the way we detect and treat disease.

1.

2.

3.

4.

5.

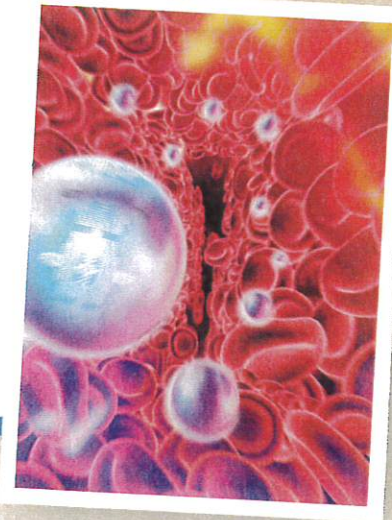
6.

7.

8.

9.

10.



WORD SORT

1–3. Find and write the words that contain **ben** or **bene**, meaning “good.”

4–8. Find and write the words that contain **mal**, meaning “bad.”

9–10. Find and write the words that contain **equ** or **equi**, meaning “same” or “equal.”